



499129758

**DIAMOND REPORT**

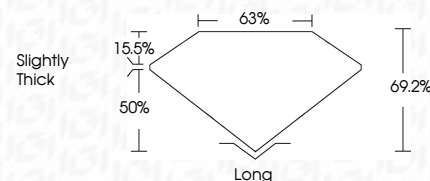
**ELECTRONIC COPY**



March 22, 2024  
 IGI Report Number 499129758  
 Description NATURAL DIAMOND  
 Shape and Cutting Style SQUARE EMERALD CUT  
 Measurements 6.89 x 6.68 x 4.62 mm

**GRADING RESULTS**

Carat Weight 2.00 CARATS  
 Color Grade J  
 Clarity Grade VVS 2  
 Cut Grade VERY GOOD



March 22, 2024  
 IGI Report Number 499129758  
 Description NATURAL DIAMOND  
 Shape and Cutting Style SQUARE EMERALD CUT  
 Measurements 6.89 x 6.68 x 4.62 mm

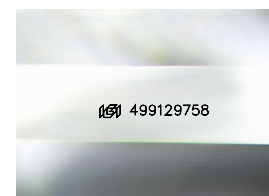
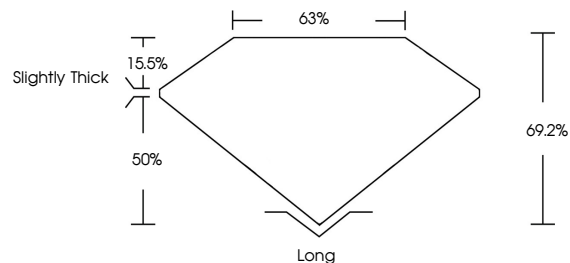
**GRADING RESULTS**

Carat Weight 2.00 CARATS  
 Color Grade J  
 Clarity Grade VVS 2  
 Cut Grade VERY GOOD

**ADDITIONAL GRADING INFORMATION**

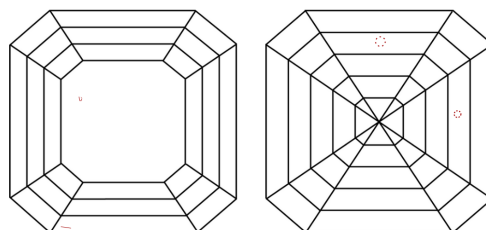
Polish EXCELLENT  
 Symmetry EXCELLENT  
 Fluorescence NONE  
 Inscription(s) IGI 499129758

**PROPORTIONS**



Sample Image Used

**CLARITY CHARACTERISTICS**



**KEY TO SYMBOLS**

Red symbols indicate internal characteristics.  
 Green symbols indicate external characteristics.

**COLOR**

D - F	G - J	K - M	N - R	S - Z	FANCY
Colorless	Near Colorless	Slightly Tinted	Very Light Color	Light Color	

**CLARITY**

IF	VS <sup>1-2</sup>	VS <sup>1-2</sup>	SI <sup>1-2</sup>	I <sup>1-3</sup>
Internally Flawless	Very Very Slightly Included	Very Slightly Included	Slightly Included	Included

**ADDITIONAL GRADING INFORMATION**

Polish EXCELLENT  
 Symmetry EXCELLENT  
 Fluorescence NONE  
 Inscription(s) IGI 499129758



**IGI**

March 22, 2024  
 IGI Report No. 499129758  
 NATURAL DIAMOND  
 SQUARE EMERALD CUT  
 6.89 x 6.68 x 4.62 mm  
 Carat Weight 2.00 CARATS  
 Color Grade J  
 Clarity Grade VVS 2  
 Cut Grade VERY GOOD  
 Depth 69.2%  
 Table 63%  
 Girdle Slightly Thick  
 Culet Long  
 Polish EXCELLENT  
 Symmetry EXCELLENT  
 Fluorescence NONE  
 Inscription(s) IGI 499129758