



499129771

DIAMOND REPORT ELECTRONIC COPY



April 1, 2024
IGI Report Number 499129771
Description NATURAL DIAMOND
Shape and Cutting Style PEAR BRILLIANT
Measurements 9.42 x 6.20 x 3.99 mm

GRADING RESULTS

Carat Weight 1.50 CARAT
Color Grade H
Clarity Grade SI 1
Cut Grade VERY GOOD

April 1, 2024
IGI Report Number 499129771
Description NATURAL DIAMOND
Shape and Cutting Style PEAR BRILLIANT
Measurements 9.42 x 6.20 x 3.99 mm

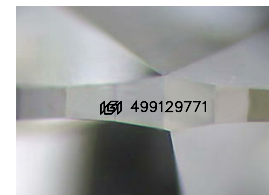
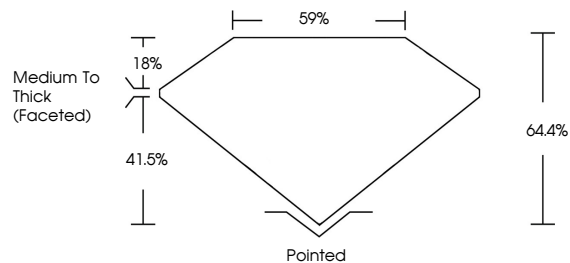
GRADING RESULTS

Carat Weight 1.50 CARAT
Color Grade H
Clarity Grade SI 1
Cut Grade VERY GOOD

ADDITIONAL GRADING INFORMATION

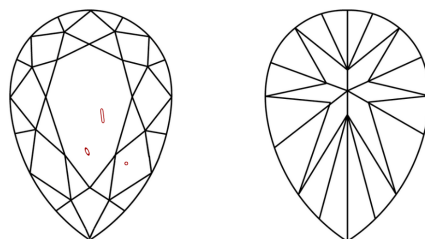
Polish EXCELLENT
Symmetry EXCELLENT
Fluorescence NONE
Inscription(s) IGI 499129771

PROPORTIONS



Sample Image Used

CLARITY CHARACTERISTICS



KEY TO SYMBOLS

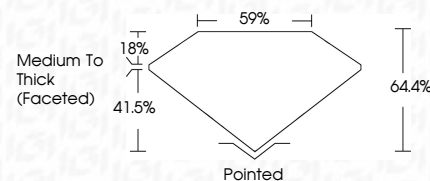
Red symbols indicate internal characteristics.
Green symbols indicate external characteristics.

COLOR

Table with columns: D - F, G - J, K - M, N - R, S - Z, FANCY. Row: Colorless, Near Colorless, Slightly Tinted, Very Light Color, Light Color.

CLARITY

Table with columns: IF, VS 1-2, VS 1-2, SI 1-2, I 1-3. Row: Internally Flawless, Very Very Slightly Included, Very Slightly Included, Slightly Included, Included.



ADDITIONAL GRADING INFORMATION

Polish EXCELLENT
Symmetry EXCELLENT
Fluorescence NONE
Inscription(s) IGI 499129771



IGI

April 1, 2024
IGI Report No. 499129771
NATURAL DIAMOND
PEAR BRILLIANT
9.42 x 6.20 x 3.99 mm
1.50 CARAT
H
SI 1
VERY GOOD
64.4%
Medium To Thick (Faceted)
Pointed
EXCELLENT
EXCELLENT
NONE
IGI 499129771