



499129799

DIAMOND REPORT

ELECTRONIC COPY



April 10, 2024
IGI Report Number 499129799
Description NATURAL DIAMOND
Shape and Cutting Style ROUND BRILLIANT
Measurements 5.97 - 6.07 x 3.87 mm

GRADING RESULTS

Carat Weight 0.90 CARAT
Color Grade J
Clarity Grade VVS 1
Cut Grade VERY GOOD

April 10, 2024
IGI Report Number 499129799
Description NATURAL DIAMOND
Shape and Cutting Style ROUND BRILLIANT
Measurements 5.97 - 6.07 x 3.87 mm

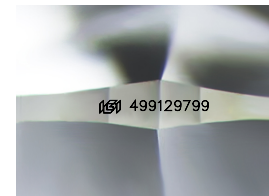
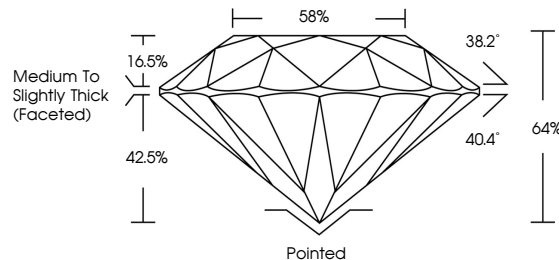
GRADING RESULTS

Carat Weight 0.90 CARAT
Color Grade J
Clarity Grade VVS 1
Cut Grade VERY GOOD

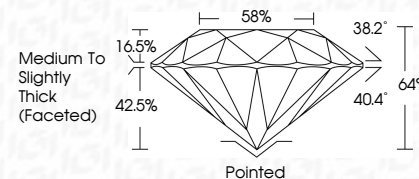
ADDITIONAL GRADING INFORMATION

Polish EXCELLENT
Symmetry EXCELLENT
Fluorescence NONE
Inscription(s) 499129799

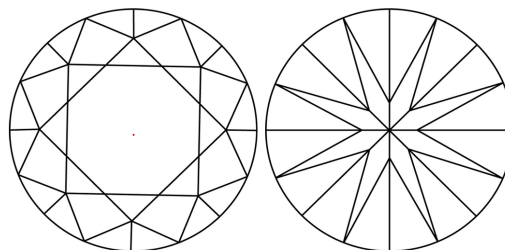
PROPORTIONS



Sample Image Used



CLARITY CHARACTERISTICS



KEY TO SYMBOLS

Red symbols indicate internal characteristics.
Green symbols indicate external characteristics.

COLOR

D - F	G - J	K - M	N - R	S - Z	FANCY
Colorless	Near Colorless	Slightly Tinted	Very Light Color	Light Color	

CLARITY

IF	WVS 1-2	VS 1-2	SI 1-2	I 1-3
Internally Flawless	Very Very Slightly Included	Very Slightly Included	Slightly Included	Included

ADDITIONAL GRADING INFORMATION

Polish EXCELLENT
Symmetry EXCELLENT
Fluorescence NONE
Inscription(s) 499129799



IGI

April 10, 2024
IGI Report No. 499129799
NATURAL DIAMOND
ROUND BRILLIANT
5.97 - 6.07 x 3.87 mm
Carat Weight 0.90 CARAT
Color Grade J
Clarity Grade VVS 1
Cut Grade VERY GOOD
Depth 64%
Table 58%
Girdle Medium To Slightly Thick (Faceted)
Culet Pointed
Polish EXCELLENT
Symmetry EXCELLENT
Fluorescence NONE
Inscription(s) 499129799