



499129812

**DIAMOND REPORT**

**ELECTRONIC COPY**



April 4, 2024  
IGI Report Number 499129812  
Description NATURAL DIAMOND  
Shape and Cutting Style ROUND BRILLIANT  
Measurements 5.99 - 6.05 x 3.87 mm

**GRADING RESULTS**

Carat Weight 0.90 CARAT  
Color Grade K  
Clarity Grade VVS 2  
Cut Grade VERY GOOD

April 4, 2024  
IGI Report Number 499129812  
Description NATURAL DIAMOND  
Shape and Cutting Style ROUND BRILLIANT  
Measurements 5.99 - 6.05 x 3.87 mm

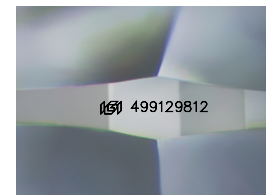
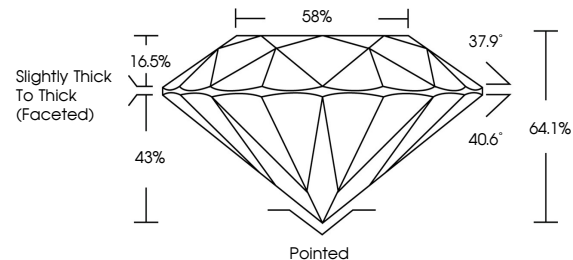
**GRADING RESULTS**

Carat Weight 0.90 CARAT  
Color Grade K  
Clarity Grade VVS 2  
Cut Grade VERY GOOD

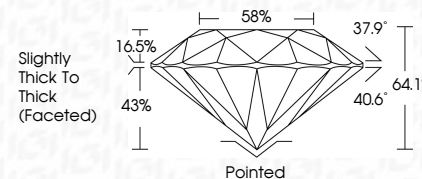
**ADDITIONAL GRADING INFORMATION**

Polish EXCELLENT  
Symmetry EXCELLENT  
Fluorescence NONE  
Inscription(s) IGI 499129812

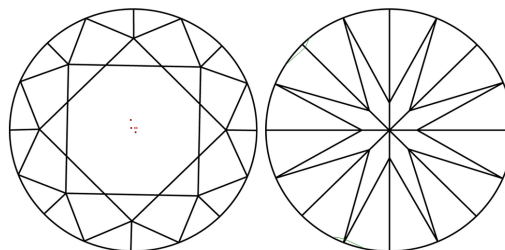
**PROPORTIONS**



Sample Image Used



**CLARITY CHARACTERISTICS**



**KEY TO SYMBOLS**

Red symbols indicate internal characteristics.  
Green symbols indicate external characteristics.

**COLOR**

D - F	G - J	K - M	N - R	S - Z	FANCY
Colorless	Near Colorless	Slightly Tinted	Very Light Color	Light Color	

**CLARITY**

IF	WVS 1-2	VS 1-2	SI 1-2	I 1-3
Internally Flawless	Very Very Slightly Included	Very Slightly Included	Slightly Included	Included

**ADDITIONAL GRADING INFORMATION**

Polish EXCELLENT  
Symmetry EXCELLENT  
Fluorescence NONE  
Inscription(s) IGI 499129812



**IGI**

April 4, 2024  
IGI Report No. 499129812  
NATURAL DIAMOND  
ROUND BRILLIANT  
5.99 - 6.05 x 3.87 mm  
Carat Weight 0.90 CARAT  
Color Grade K  
Clarity Grade VVS2  
Cut Grade VERY GOOD  
Depth 64.1%  
Table 58%  
Girdle Slightly Thick To Thick (Faceted)  
Culet Pointed  
Polish EXCELLENT  
Symmetry EXCELLENT  
Fluorescence NONE  
Inscription(s) IGI 499129812