



499129888

DIAMOND REPORT

ELECTRONIC COPY



April 27, 2024
IGI Report Number 499129888
Description NATURAL DIAMOND
Shape and Cutting Style ROUND BRILLIANT
Measurements 7.00 - 7.04 x 4.29 mm

GRADING RESULTS

Carat Weight 1.31 CARAT
Color Grade K
Clarity Grade VVS 2
Cut Grade EXCELLENT

April 27, 2024
IGI Report Number 499129888
Description NATURAL DIAMOND
Shape and Cutting Style ROUND BRILLIANT
Measurements 7.00 - 7.04 x 4.29 mm

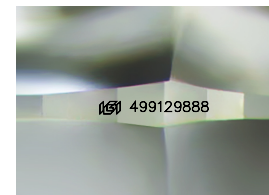
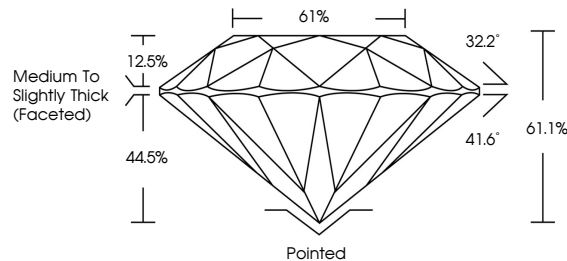
GRADING RESULTS

Carat Weight 1.31 CARAT
Color Grade K
Clarity Grade VVS 2
Cut Grade EXCELLENT

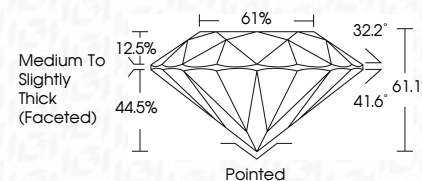
ADDITIONAL GRADING INFORMATION

Polish EXCELLENT
Symmetry EXCELLENT
Fluorescence SLIGHT
Inscription(s) 499129888

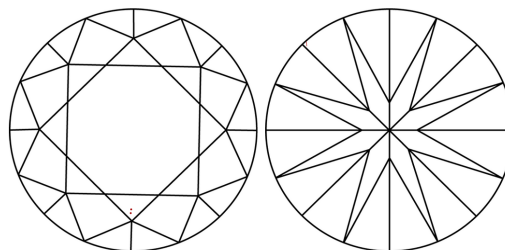
PROPORTIONS



Sample Image Used



CLARITY CHARACTERISTICS



KEY TO SYMBOLS

Red symbols indicate internal characteristics.
Green symbols indicate external characteristics.

COLOR

D - F	G - J	K - M	N - R	S - Z	FANCY
Colorless	Near Colorless	Slightly Tinted	Very Light Color	Light Color	

CLARITY

IF	VVS 1-2	VS 1-2	SI 1-2	I 1-3
Internally Flawless	Very Very Slightly Included	Very Slightly Included	Slightly Included	Included

ADDITIONAL GRADING INFORMATION

Polish EXCELLENT
Symmetry EXCELLENT
Fluorescence SLIGHT
Inscription(s) 499129888



IGI

April 27, 2024
IGI Report No. 499129888
NATURAL DIAMOND
ROUND BRILLIANT
7.00 - 7.04 x 4.29 mm
Carat Weight 1.31 CARAT
Color Grade K
Clarity Grade VVS2
Cut Grade EXCELLENT
Depth 61.1%
Table 61%
Girdle Medium To Slightly Thick (Faceted)
Culet Pointed
Polish EXCELLENT
Symmetry EXCELLENT
Fluorescence SLIGHT
Inscription(s) 499129888