



530201906

DIAMOND REPORT **ELECTRONIC COPY**

June 15, 2022
 IGI Report Number 530201906
 Description NATURAL DIAMOND
 Shape and Cutting Style ROUND BRILLIANT
 Measurements 7.06 - 7.17 x 4.61 mm

GRADING RESULTS

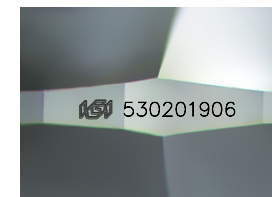
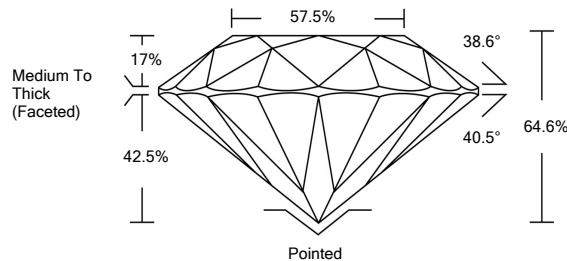
Carat Weight 1.50 CARAT
 Color Grade J
 Clarity Grade VVS 1
 Cut Grade VERY GOOD

ADDITIONAL GRADING INFORMATION

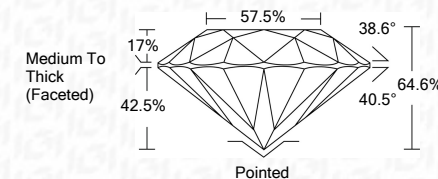
Polish EXCELLENT
 Symmetry VERY GOOD
 Fluorescence NONE
 Inscription(s) IGI 530201906



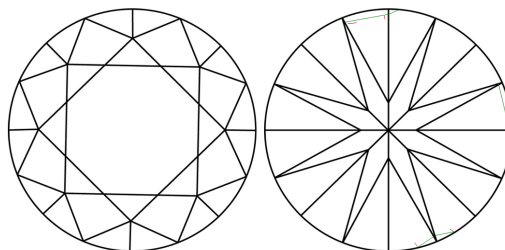
PROPORTIONS



Sample Image Used



CLARITY CHARACTERISTICS



KEY TO SYMBOLS

Red symbols indicate internal characteristics.
 Green symbols indicate external characteristics.

COLOR

| D - F | G - J | K - M | N - R | S - Z | FANCY |
|-----------|----------------|-----------------|------------------|-------------|-------|
| Colorless | Near Colorless | Slightly Tinted | Very Light Color | Light Color | |

CLARITY

| IF | VS ¹⁻² | VS ¹⁻² | SI ¹⁻² | I ¹⁻³ |
|---------------------|-----------------------------|------------------------|-------------------|------------------|
| Internally Flawless | Very Very Slightly Included | Very Slightly Included | Slightly Included | Included |

ADDITIONAL GRADING INFORMATION

Polish EXCELLENT
 Symmetry VERY GOOD
 Fluorescence NONE
 Inscription(s) IGI 530201906



IGI

June 15, 2022
 IGI Report No 530201906
 NATURAL DIAMOND
 ROUND BRILLIANT
 7.06 - 7.17 x 4.61 mm
 Carat Weight 1.50 CARAT
 Color Grade J
 Clarity Grade VVS 1
 Cut Grade VERY GOOD
 Depth 64.6%
 Table 57.5%
 Girdle Medium To Thick (Faceted)
 Culet Pointed
 Polish EXCELLENT
 Symmetry VERY GOOD
 Fluorescence NONE
 Inscription(s) IGI 530201906