



530201910

DIAMOND REPORT

ELECTRONIC COPY



July 14, 2022
IGI Report Number 530201910
Description NATURAL DIAMOND
Shape and Cutting Style ROUND BRILLIANT
Measurements 6.50 - 6.55 x 4.06 mm

GRADING RESULTS

Carat Weight 1.07 CARAT
Color Grade J
Clarity Grade INTERNALLY FLAWLESS
Cut Grade EXCELLENT

July 14, 2022
IGI Report Number 530201910
Description NATURAL DIAMOND
Shape and Cutting Style ROUND BRILLIANT
Measurements 6.50 - 6.55 x 4.06 mm

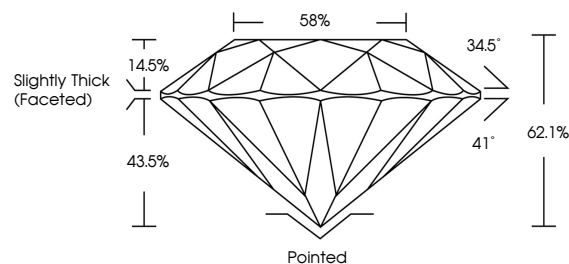
GRADING RESULTS

Carat Weight 1.07 CARAT
Color Grade J
Clarity Grade INTERNALLY FLAWLESS
Cut Grade EXCELLENT

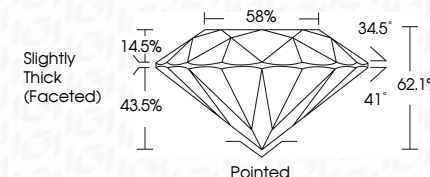
ADDITIONAL GRADING INFORMATION

Polish EXCELLENT
Symmetry EXCELLENT
Fluorescence NONE
Inscription(s) IGI 530201910
Comments: IDEAL CUT ROUND BRILLIANT

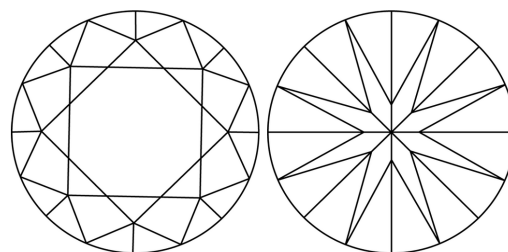
PROPORTIONS



Sample Image Used



CLARITY CHARACTERISTICS



COLOR

D - F	G - J	K - M	N - R	S - Z	FANCY
Colorless	Near Colorless	Slightly Tinted	Very Light Color	Light Color	

CLARITY

IF	VS ¹⁻²	VS ¹⁻²	SI ¹⁻²	I ¹⁻³
Internally Flawless	Very Very Slightly Included	Very Slightly Included	Slightly Included	Included

KEY TO SYMBOLS

Red symbols indicate internal characteristics.
Green symbols indicate external characteristics.



ADDITIONAL GRADING INFORMATION

Polish EXCELLENT
Symmetry EXCELLENT
Fluorescence NONE
Inscription(s) IGI 530201910
Comments: IDEAL CUT ROUND BRILLIANT



IGI

July 14, 2022
IGI Report No 530201910
NATURAL DIAMOND
ROUND BRILLIANT
6.50 - 6.55 x 4.06 mm
Carat Weight 1.07 CARAT
Color Grade J
Clarity Grade IF
Cut Grade EXCELLENT
Depth 62.1%
Table 58%
Grade Slightly Thick (Faceted)
Cut Pointed
Polish EXCELLENT
Symmetry EXCELLENT
Fluorescence NONE
Inscription(s) IGI 530201910
Comments: IDEAL CUT ROUND BRILLIANT