



530201927

DIAMOND REPORT

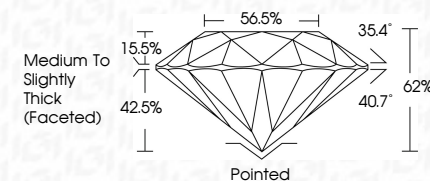
ELECTRONIC COPY



October 3, 2022
IGI Report Number 530201927
Description NATURAL DIAMOND
Shape and Cutting Style ROUND BRILLIANT
Measurements 6.45 - 6.50 x 4.02 mm

GRADING RESULTS

Carat Weight 1.04 CARAT
Color Grade J
Clarity Grade INTERNALLY FLAWLESS
Cut Grade EXCELLENT



October 3, 2022
IGI Report Number 530201927
Description NATURAL DIAMOND
Shape and Cutting Style ROUND BRILLIANT
Measurements 6.45 - 6.50 x 4.02 mm

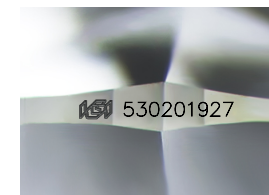
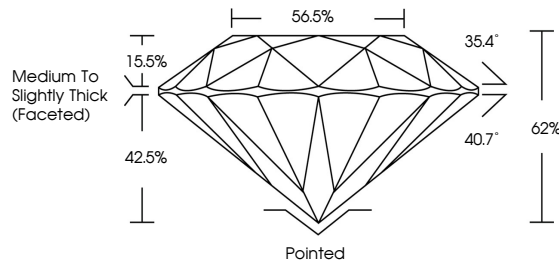
GRADING RESULTS

Carat Weight 1.04 CARAT
Color Grade J
Clarity Grade INTERNALLY FLAWLESS
Cut Grade EXCELLENT

ADDITIONAL GRADING INFORMATION

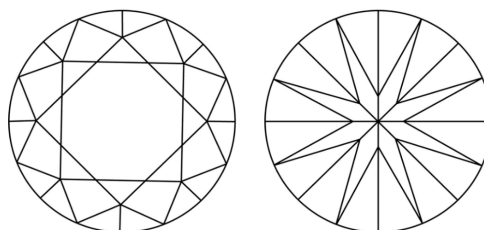
Polish EXCELLENT
Symmetry EXCELLENT
Fluorescence NONE
Inscription(s) IGI 530201927
Comments: IDEAL CUT ROUND BRILLIANT

PROPORTIONS



Sample Image Used

CLARITY CHARACTERISTICS



KEY TO SYMBOLS

Red symbols indicate internal characteristics.
Green symbols indicate external characteristics.

COLOR

D - F	G - J	K - M	N - R	S - Z	FANCY
Colorless	Near Colorless	Slightly Tinted	Very Light Color	Light Color	

CLARITY

IF	VS ¹⁻²	VS ¹⁻²	SI ¹⁻²	I ¹⁻³
Internally Flawless	Very Very Slightly Included	Very Slightly Included	Slightly Included	Included

ADDITIONAL GRADING INFORMATION

Polish EXCELLENT
Symmetry EXCELLENT
Fluorescence NONE
Inscription(s) IGI 530201927
Comments: IDEAL CUT ROUND BRILLIANT



IGI



October 3, 2022
IGI Report No 530201927
NATURAL DIAMOND
ROUND BRILLIANT
6.45 - 6.50 x 4.02 mm
Carat Weight 1.04 CARAT
Color Grade J
Clarity Grade IF
Cut Grade EXCELLENT
Depth 62%
Table 56.5%
Girdle Medium To Slightly Thick (Faceted)
Culet Pointed
Polish EXCELLENT
Symmetry EXCELLENT
Fluorescence NONE
Inscription(s) IGI 530201927
Comments: IDEAL CUT ROUND BRILLIANT