



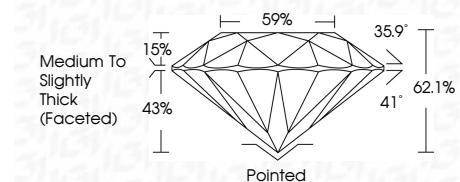
**ELECTRONIC COPY**

612307839  
Report verification at [igi.org](http://igi.org)



May 7, 2024  
IGI Report Number **612307839**  
Description **NATURAL DIAMOND**  
Shape and Cutting Style **ROUND BRILLIANT**  
Measurements **6.39 - 6.42 X 3.98 MM**

**GRADING RESULTS**  
Carat Weight **1.02 CARAT**  
Color Grade **H**  
Clarity Grade **SI 2**  
Cut Grade **EXCELLENT**

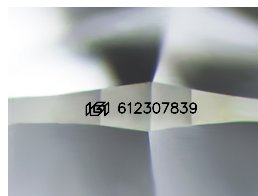


**ADDITIONAL GRADING INFORMATION**  
Polish **VERY GOOD**  
Symmetry **EXCELLENT**  
Fluorescence **NONE**  
Inscription(s) **IGI 612307839**  
Comments: IDEAL CUT ROUND BRILLIANT



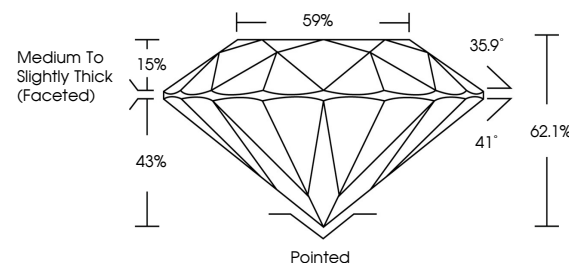
1.02 CARAT  
H  
SI 2  
EXCELLENT  
62.1%  
59%  
Medium To Slightly Thick (Faceted)  
Pointed  
VERY GOOD  
EXCELLENT  
NONE  
IGI 612307839

May 7, 2024  
IGI Report No 612307839  
ROUND BRILLIANT  
6.39 - 6.42 X 3.98 MM  
Carat Weight  
Color Grade  
Clarity Grade  
Cut Grade  
Depth  
Table  
Girdle  
Culet  
Polish  
Symmetry  
Fluorescence  
Inscription(s)  
Comments: IDEAL CUT ROUND BRILLIANT

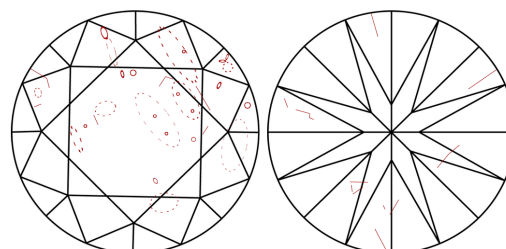


Sample Image Used

**PROPORTIONS**



**CLARITY CHARACTERISTICS**



**KEY TO SYMBOLS**

Red symbols indicate internal characteristics.  
Green symbols indicate external characteristics.

**COLOR**

D - F	G - J	K - M	N - R	S - Z	FANCY
Colorless	Near Colorless	Slightly Tinted	Very Light Color	Light Color	

**CLARITY**

IF	VS <sup>1-2</sup>	VS <sup>1-2</sup>	SI <sup>1-2</sup>	I <sup>1-3</sup>
Internally Flawless	Very Very Slightly Included	Very Slightly Included	Slightly Included	Included



May 7, 2024  
IGI Report Number **612307839**  
Description **NATURAL DIAMOND**  
Shape and Cutting Style **ROUND BRILLIANT**  
Measurements **6.39 - 6.42 X 3.98 MM**

**GRADING RESULTS**  
Carat Weight **1.02 CARAT**  
Color Grade **H**  
Clarity Grade **SI 2**  
Cut Grade **EXCELLENT**

**ADDITIONAL GRADING INFORMATION**  
Polish **VERY GOOD**  
Symmetry **EXCELLENT**  
Fluorescence **NONE**  
Inscription(s) **IGI 612307839**  
Comments: IDEAL CUT ROUND BRILLIANT