



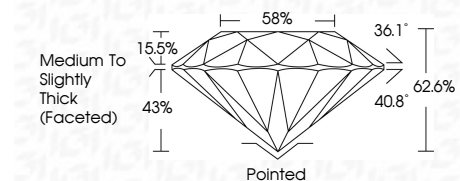
**ELECTRONIC COPY**

612308132  
Report verification at [igi.org](http://igi.org)



May 10, 2024  
IGI Report Number **612308132**  
Description **NATURAL DIAMOND**  
Shape and Cutting Style **ROUND BRILLIANT**  
Measurements **9.32 - 9.38 X 5.86 MM**

**GRADING RESULTS**  
Carat Weight **3.20 CARATS**  
Color Grade **J**  
Clarity Grade **VS 1**  
Cut Grade **EXCELLENT**



**ADDITIONAL GRADING INFORMATION**  
Polish **EXCELLENT**  
Symmetry **EXCELLENT**  
Fluorescence **SLIGHT**  
Inscription(s) **IGI 612308132**



May 10, 2024  
IGI Report No. 612308132  
**ROUND BRILLIANT**  
9.32 - 9.38 X 5.86 MM  
3.20 CARATS  
J  
EXCELLENT  
62.6%  
58%  
Medium To Slightly Thick (Faceted)  
Pointed  
EXCELLENT  
EXCELLENT  
SLIGHT  
IGI 612308132

Culet  
Polish  
Symmetry  
Fluorescence  
Inscription(s)

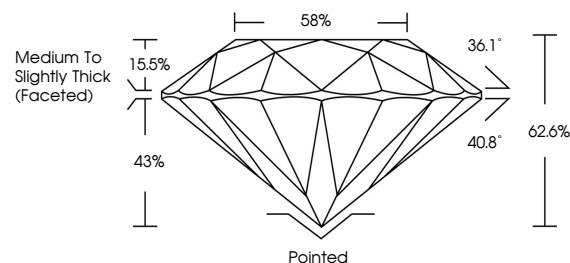
**DIAMOND REPORT**

May 10, 2024  
IGI Report Number **612308132**  
Description **NATURAL DIAMOND**  
Shape and Cutting Style **ROUND BRILLIANT**  
Measurements **9.32 - 9.38 X 5.86 MM**

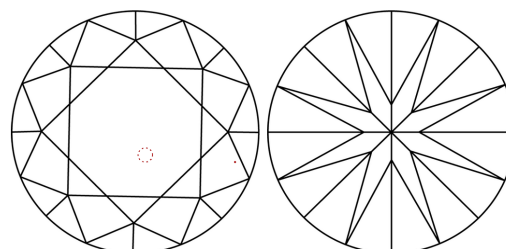
**GRADING RESULTS**  
Carat Weight **3.20 CARATS**  
Color Grade **J**  
Clarity Grade **VS 1**  
Cut Grade **EXCELLENT**

**ADDITIONAL GRADING INFORMATION**  
Polish **EXCELLENT**  
Symmetry **EXCELLENT**  
Fluorescence **SLIGHT**  
Inscription(s) **IGI 612308132**

**PROPORTIONS**

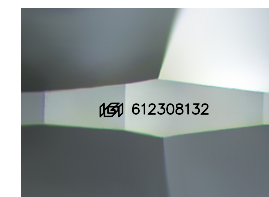


**CLARITY CHARACTERISTICS**



**KEY TO SYMBOLS**

Red symbols indicate internal characteristics.  
Green symbols indicate external characteristics.



Sample Image Used

**COLOR**

D - F	G - J	K - M	N - R	S - Z	FANCY
Colorless	Near Colorless	Slightly Tinted	Very Light Color	Light Color	

**CLARITY**

IF	VS <sup>1-2</sup>	VS <sup>1-2</sup>	SI <sup>1-2</sup>	I <sup>1-3</sup>
Internally Flawless	Very Very Slightly Included	Very Slightly Included	Slightly Included	Included

