



ELECTRONIC COPY

628456215
Report verification at igi.org



May 27, 2024
IGI Report Number **628456215**
Description **NATURAL DIAMOND**
Shape and Cutting Style **ROUND BRILLIANT**
Measurements **6.31 - 6.38 X 3.97 MM**
GRADING RESULTS
Carat Weight **1.00 CARAT**
Color Grade **J**
Clarity Grade **VVS 1**
Cut Grade **EXCELLENT**

DIAMOND REPORT

May 27, 2024
IGI Report Number **628456215**
Description **NATURAL DIAMOND**
Shape and Cutting Style **ROUND BRILLIANT**
Measurements **6.31 - 6.38 X 3.97 MM**

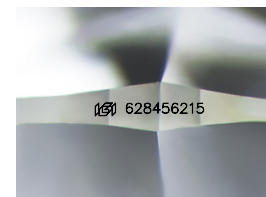
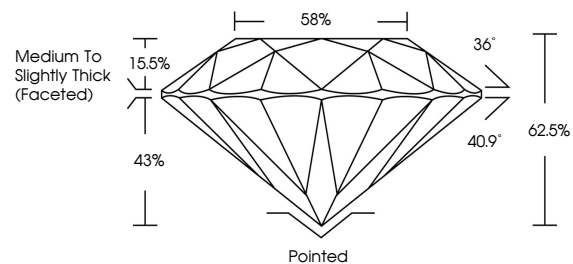
GRADING RESULTS

Carat Weight **1.00 CARAT**
Color Grade **J**
Clarity Grade **VVS 1**
Cut Grade **EXCELLENT**

ADDITIONAL GRADING INFORMATION

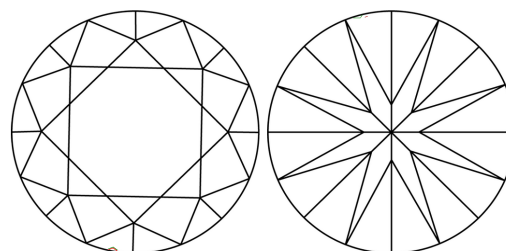
Polish **EXCELLENT**
Symmetry **VERY GOOD**
Fluorescence **NONE**
Inscription(s) **628456215**
Comments: IDEAL CUT ROUND BRILLIANT

PROPORTIONS



Sample Image Used

CLARITY CHARACTERISTICS



KEY TO SYMBOLS

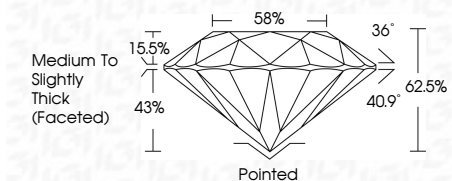
Red symbols indicate internal characteristics.
Green symbols indicate external characteristics.

COLOR

| D - F | G - J | K - M | N - R | S - Z | FANCY |
|-----------|----------------|-----------------|------------------|-------------|-------|
| Colorless | Near Colorless | Slightly Tinted | Very Light Color | Light Color | |

CLARITY

| IF | VVS ¹⁻² | VS ¹⁻² | SI ¹⁻² | I ¹⁻³ |
|---------------------|-----------------------------|------------------------|-------------------|------------------|
| Internally Flawless | Very Very Slightly Included | Very Slightly Included | Slightly Included | Included |



ADDITIONAL GRADING INFORMATION

Polish **EXCELLENT**
Symmetry **VERY GOOD**
Fluorescence **NONE**
Inscription(s) **628456215**
Comments: IDEAL CUT ROUND BRILLIANT



IGI



May 27, 2024
IGI Report No 628456215
ROUND BRILLIANT
6.31 - 6.38 X 3.97 MM
1.00 CARAT
J
Color Grade **EXCELLENT**
Clarity Grade **VVS 1**
Depth **62.5%**
Table **58%**
Girdle **Medium To Slightly Thick (Faceted)**
Culet **Pointed**
Polish **EXCELLENT**
Symmetry **VERY GOOD**
Fluorescence **NONE**
Inscription(s) **628456215**

Comments: IDEAL CUT ROUND BRILLIANT