



ELECTRONIC COPY

628457169
Report verification at igi.org



June 7, 2024
IGI Report Number **628457169**
Description **NATURAL DIAMOND**
Shape and Cutting Style **ROUND BRILLIANT**
Measurements **6.49 - 6.53 X 3.87 MM**
GRADING RESULTS
Carat Weight **1.01 CARAT**
Color Grade **I**
Clarity Grade **INTERNALLY FLAWLESS**
Cut Grade **EXCELLENT**

DIAMOND REPORT

June 7, 2024
IGI Report Number **628457169**
Description **NATURAL DIAMOND**
Shape and Cutting Style **ROUND BRILLIANT**
Measurements **6.49 - 6.53 X 3.87 MM**

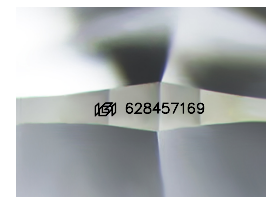
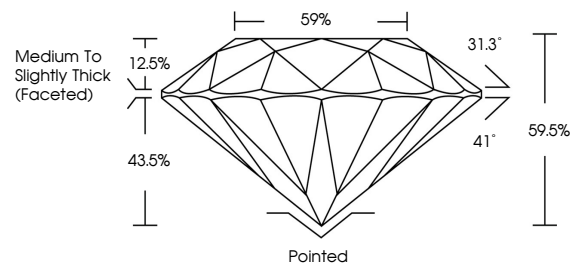
GRADING RESULTS

Carat Weight **1.01 CARAT**
Color Grade **I**
Clarity Grade **INTERNALLY FLAWLESS**
Cut Grade **EXCELLENT**

ADDITIONAL GRADING INFORMATION

Polish **EXCELLENT**
Symmetry **EXCELLENT**
Fluorescence **VERY SLIGHT**
Inscription(s) **628457169**

PROPORTIONS



Sample Image Used

CLARITY CHARACTERISTICS



KEY TO SYMBOLS

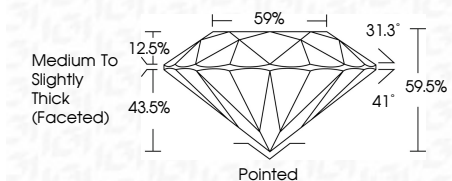
Red symbols indicate internal characteristics.
Green symbols indicate external characteristics.

COLOR

D - F	G - J	K - M	N - R	S - Z	FANCY
Colorless	Near Colorless	Slightly Tinted	Very Light Color	Light Color	

CLARITY

IF	VVS ¹⁻²	VS ¹⁻²	SI ¹⁻²	I ¹⁻³
Internally Flawless	Very Very Slightly Included	Very Slightly Included	Slightly Included	Included



ADDITIONAL GRADING INFORMATION

Polish **EXCELLENT**
Symmetry **EXCELLENT**
Fluorescence **VERY SLIGHT**
Inscription(s) **628457169**



IGI



June 7, 2024
IGI Report No. **628457169**
ROUND BRILLIANT
Carat Weight **1.01 CARAT**
Color Grade **I**
Clarity Grade **EXCELLENT**
Depth **59.5%**
Table **59%**
Girdle **Medium To Slightly Thick (Faceted)**
Culet **Pointed**
Polish **EXCELLENT**
Symmetry **EXCELLENT**
Fluorescence **VERY SLIGHT**
Inscription(s) **628457169**