



ELECTRONIC COPY

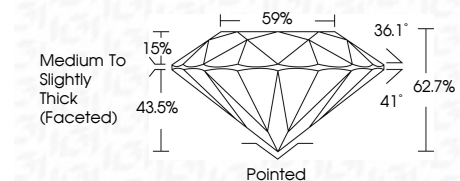
628457197
Report verification at igi.org



June 6, 2024
IGI Report Number **628457197**
Description **NATURAL DIAMOND**
Shape and Cutting Style **ROUND BRILLIANT**
Measurements **6.06 - 6.14 X 3.84 MM**

GRADING RESULTS

Carat Weight **0.90 CARAT**
Color Grade **G**
Clarity Grade **VVS 2**
Cut Grade **EXCELLENT**



ADDITIONAL GRADING INFORMATION

Polish **EXCELLENT**
Symmetry **VERY GOOD**
Fluorescence **NONE**
Inscription(s) **IGI 628457197**



IGI

June 6, 2024
IGI Report No. 628457197
ROUND BRILLIANT
6.06 - 6.14 X 3.84 MM
0.90 CARAT
G
VVS 2
EXCELLENT
62.7%
59%
Medium To Slightly Thick (Faceted)
Pointed
EXCELLENT
VERY GOOD
NONE
IGI 628457197

DIAMOND REPORT

June 6, 2024
IGI Report Number **628457197**
Description **NATURAL DIAMOND**
Shape and Cutting Style **ROUND BRILLIANT**
Measurements **6.06 - 6.14 X 3.84 MM**

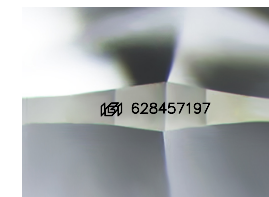
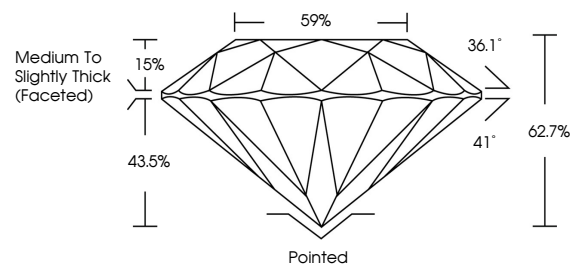
GRADING RESULTS

Carat Weight **0.90 CARAT**
Color Grade **G**
Clarity Grade **VVS 2**
Cut Grade **EXCELLENT**

ADDITIONAL GRADING INFORMATION

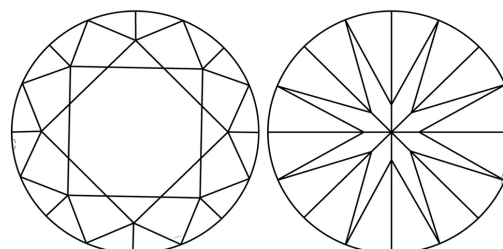
Polish **EXCELLENT**
Symmetry **VERY GOOD**
Fluorescence **NONE**
Inscription(s) **IGI 628457197**

PROPORTIONS



Sample Image Used

CLARITY CHARACTERISTICS



KEY TO SYMBOLS

Red symbols indicate internal characteristics.
Green symbols indicate external characteristics.

COLOR

D - F	G - J	K - M	N - R	S - Z	FANCY
Colorless	Near Colorless	Slightly Tinted	Very Light Color	Light Color	

CLARITY

IF	VVS ¹⁻²	VS ¹⁻²	SI ¹⁻²	I ¹⁻³
Internally Flawless	Very Very Slightly Included	Very Slightly Included	Slightly Included	Included

