



**ELECTRONIC COPY**

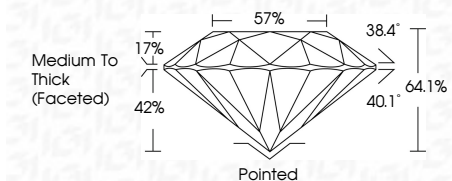
639403289  
Report verification at igi.org



August 28, 2024  
IGI Report Number **639403289**  
Description **NATURAL DIAMOND**  
Shape and Cutting Style **ROUND BRILLIANT**  
Measurements **6.21 - 6.29 X 4.00 MM**

**GRADING RESULTS**

Carat Weight **1.01 CARAT**  
Color Grade **I**  
Clarity Grade **SI 2**  
Cut Grade **VERY GOOD**



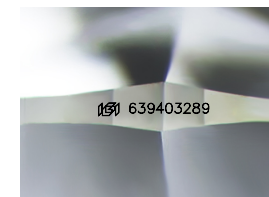
**ADDITIONAL GRADING INFORMATION**

Polish **VERY GOOD**  
Symmetry **VERY GOOD**  
Fluorescence **VERY SLIGHT**  
Inscription(s) **IGI 639403289**



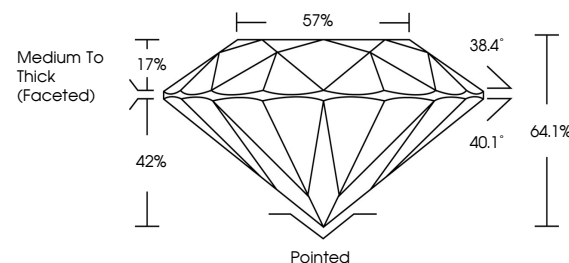
**IGI**

August 28, 2024  
IGI Report No 639403289  
**ROUND BRILLIANT**  
6.21 - 6.29 X 4.00 MM  
1.01 CARAT  
I  
Color Grade **VERY GOOD**  
SI 2  
Clarity Grade  
64.1%  
Depth  
57%  
Table  
Cut Grade  
Medium To Thick (Faceted)  
Pointed  
VERY GOOD  
Symmetry  
VERY SLIGHT  
Fluorescence  
IGI 639403289  
Inscriptions(s)

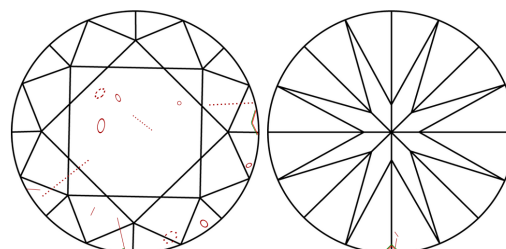


Sample Image Used

**PROPORTIONS**



**CLARITY CHARACTERISTICS**



**KEY TO SYMBOLS**

Red symbols indicate internal characteristics.  
Green symbols indicate external characteristics.

**COLOR**

D - F	G - J	K - M	N - R	S - Z	FANCY
Colorless	Near Colorless	Slightly Tinted	Very Light Color	Light Color	

**CLARITY**

IF	VVS <sup>1-2</sup>	VS <sup>1-2</sup>	SI <sup>1-2</sup>	I <sup>1-3</sup>
Internally Flawless	Very Very Slightly Included	Very Slightly Included	Slightly Included	Included

