



ELECTRONIC COPY

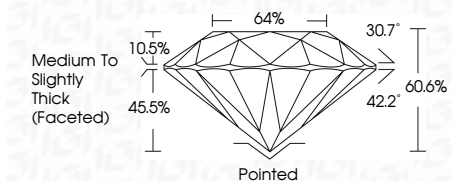
639403293
Report verification at igi.org



August 28, 2024
IGI Report Number **639403293**
Description **NATURAL DIAMOND**
Shape and Cutting Style **ROUND BRILLIANT**
Measurements **6.47 - 6.49 X 3.93 MM**

GRADING RESULTS

Carat Weight **1.02 CARAT**
Color Grade **F**
Clarity Grade **SI 2**
Cut Grade **VERY GOOD**



ADDITIONAL GRADING INFORMATION

Polish **EXCELLENT**
Symmetry **VERY GOOD**
Fluorescence **NONE**
Inscription(s) **IGI 639403293**



IGI

August 28, 2024
IGI Report No 639403293
ROUND BRILLIANT
6.47 - 6.49 X 3.93 MM
1.02 CARAT
F
SI 2
VERY GOOD
60.6%
64%
Medium To Slightly Thick (Faceted)
Pointed
EXCELLENT
VERY GOOD
NONE
IGI 639403293

August 28, 2024
IGI Report No 639403293

ROUND BRILLIANT

6.47 - 6.49 X 3.93 MM

1.02 CARAT

F

SI 2

VERY GOOD

60.6%

64%

Medium To Slightly Thick (Faceted)

Pointed

EXCELLENT

VERY GOOD

NONE

IGI 639403293

DIAMOND REPORT

August 28, 2024
IGI Report Number **639403293**
Description **NATURAL DIAMOND**
Shape and Cutting Style **ROUND BRILLIANT**
Measurements **6.47 - 6.49 X 3.93 MM**

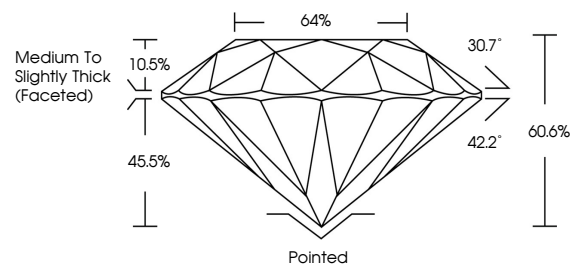
GRADING RESULTS

Carat Weight **1.02 CARAT**
Color Grade **F**
Clarity Grade **SI 2**
Cut Grade **VERY GOOD**

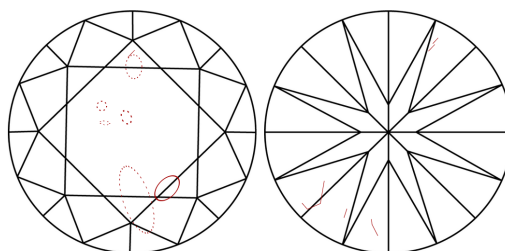
ADDITIONAL GRADING INFORMATION

Polish **EXCELLENT**
Symmetry **VERY GOOD**
Fluorescence **NONE**
Inscription(s) **IGI 639403293**

PROPORTIONS

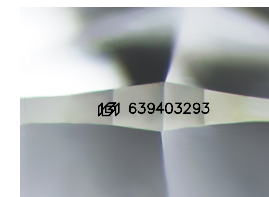


CLARITY CHARACTERISTICS



KEY TO SYMBOLS

Red symbols indicate internal characteristics.
Green symbols indicate external characteristics.



Sample Image Used

COLOR

D - F	G - J	K - M	N - R	S - Z	FANCY
Colorless	Near Colorless	Slightly Tinted	Very Light Color	Light Color	

CLARITY

IF	VVS ¹⁻²	VS ¹⁻²	SI ¹⁻²	I ¹⁻³
Internally Flawless	Very Very Slightly Included	Very Slightly Included	Slightly Included	Included

